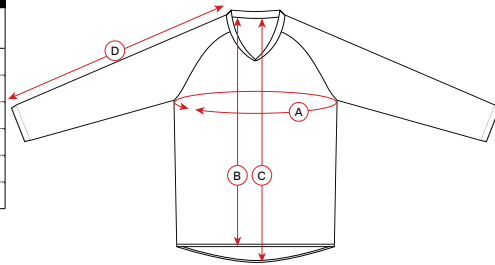


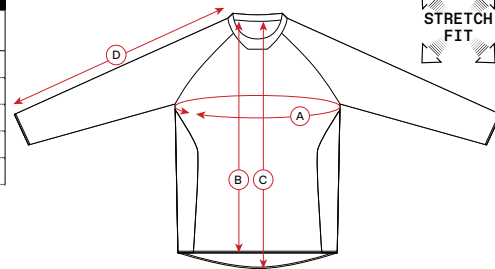
# SIZE CHARTS

ADULT JERSEY				
SIZE	A Circonfenza torace Chest circumference	B Lunghezza davanti Front length	C Lunghezza dietro Center back length	D Lunghezza manica Sleeves length
S	104	70	78	78
M	107	71	80	80
L	112	74	82	83
XL	115	76	84	86
2XL	119	79	86	89
3XL	125	81	88	91



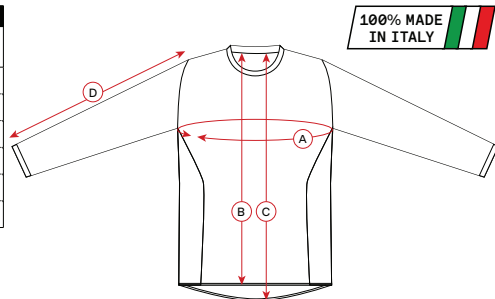
Tutte le misure sono espresse in cm / All measurements are expressed in cm

ADULT "STRETCH FIT" JERSEY				
SIZE	A Circonfenza torace Chest circumference	B Lunghezza davanti Front length	C Lunghezza dietro Center back length	D Lunghezza manica Sleeves length
S	104	73	77	76
M	109	75	80	78
L	114	76	82	80
XL	118	79	84	82
2XL	120	83	86	84



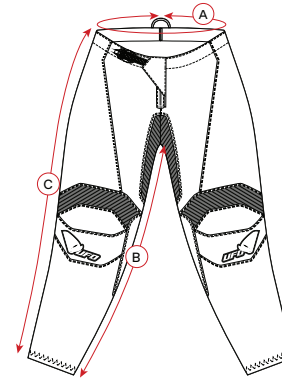
Tutte le misure sono espresse in cm / All measurements are expressed in cm

ADULT "MADE IN ITALY" JERSEY				
SIZE	A Circonfenza torace Chest circumference	B Lunghezza davanti Front length	C Lunghezza dietro Center back length	D Lunghezza manica Sleeves length
S	98	72	77	65
M	102	74	79	67
L	106	76	81	69
XL	110	78	83	70
2XL	116	80	86	71
3XL	120	83	89	73



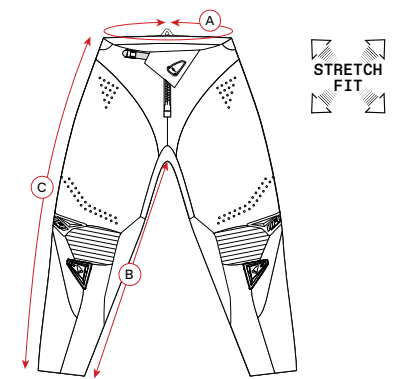
Tutte le misure sono espresse in cm / All measurements are expressed in cm

ADULT PANTS			
SIZE USA/EU	A Circonfenza vita Waist circumference	B Cavallo Inseam	C Lunghezza Length
26/44	76	73	90
28/46	79	75	92
30/48	83	78	95
32/50	86	79	97
34/52	92	81	100
36/54	97	82	102
38/56	103	83	104
40/58	107	84	106



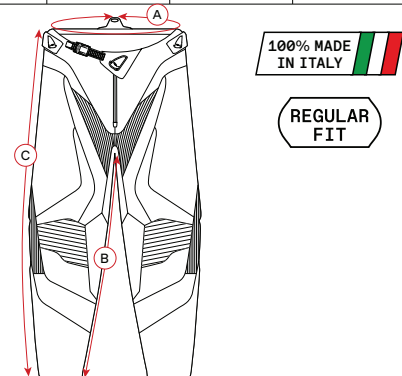
tutte le misure sono espresse in cm / All measurements are expressed in cm

ADULT "STRETCH FIT" PANTS			
SIZE USA/EU	A Circonfenza vita Waist circumference	B Cavallo Inseam	C Lunghezza Length
26/44	76	71	90
28/46	79	73	93
30/48	83	75	96
32/50	89	77	99
34/52	93	79	102
36/54	98	81	104



tutte le misure sono espresse in cm / All measurements are expressed in cm

ADULT MADE IN ITALY "REGULAR" PANTS			
SIZE USA/EU	A Circonfenza vita Waist circumference	B Cavallo Inseam	C Lunghezza Length
26/44	76	73	95
28/46	79	74	97
30/48	82	76	99
32/50	85	78	101
34/52	88	80	103
36/54	91	82	105
38/56	94	83	107
40/58	97	84	109



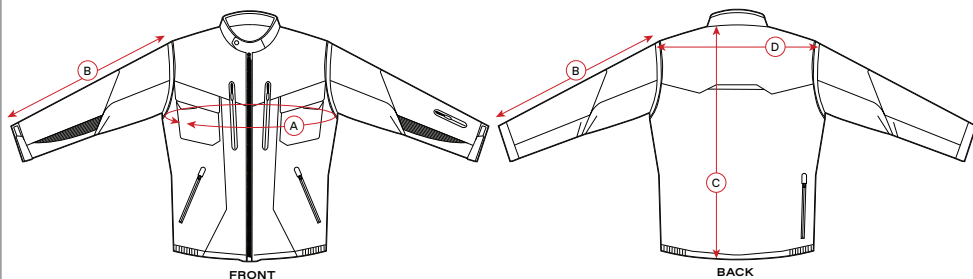
tutte le misure sono espresse in cm / All measurements are expressed in cm

ADULT MADE IN ITALY "STRETCH FIT" PANTS			
SIZE USA/EU	A Circonfenza vita Waist circumference	B Cavallo Inseam	C Lunghezza Length
26/44	76	73	95
28/46	79	74	97
30/48	82	76	99
32/50	85	78	101
34/52	88	80	103
36/54	91	82	105



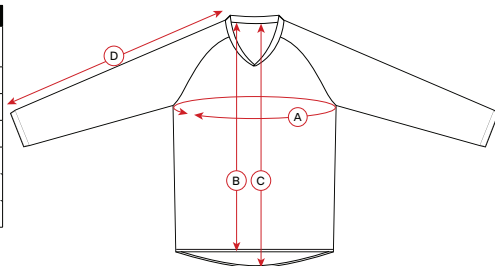
tutte le misure sono espresse in cm / All measurements are expressed in cm

ADULT "TAIGA" ENDURO JACKET				
SIZE	A Circonfenza torace Chest circumference	B Lunghezza manica Sleeves length	C Lunghezza dietro Center back length	D Larghezza spalle Shoulder width
M	120	65	71	52
L	125	68	73	54
XL	130	69	75	55
XXL	134	71	76	56



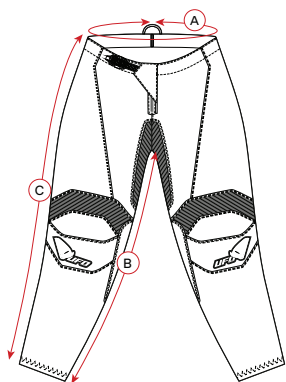
Tutte le misure sono espresse in cm / All measurements are expressed in cm

KID JERSEY				
SIZE	A Circonfenza torace Chest circumference	B Lunghezza davanti Front length	C Lunghezza dietro Center back length	D Lunghezza manica Sleeves length
5XS	80	49	52	48
4XS	82	52	55	51
3XS	87	55	57	56
2XS	91	60	63	60
XS	96	62	67	63
S	100	64	71	66



Tutte le misure sono espresse in cm / All measurements are expressed in cm

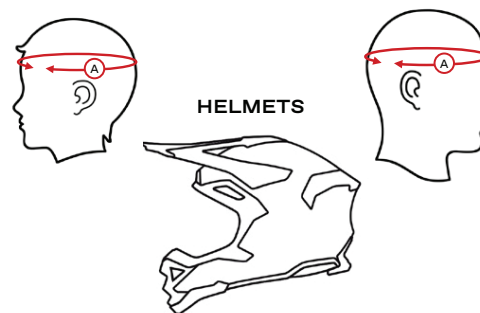
KID PANTS			
SIZE	A Circonfenza vita Waist circumference	B Cavallo Inseam	C Lunghezza Length
18 (18/20)	54	58	70
22 (22/24)	57	60	73
26 (24/26)	62	62	75
30 (28/30)	66	64	78
34 (32/34)	71	66	82
38 (36/38)	77	68	84
40 (40/42)	81	71	86



Tutte le misure sono espresse in cm / All measurements are expressed in cm

ADULT HELMETS						
	XXS	XS	S	M	L	XL
A	52 / 53	53 / 54	55 / 56	57 / 58	59 / 60	61 / 62

KID HELMETS			
	S	M	L
A	49 / 50	51 / 52	53 / 54



Tutte le misure sono espresse in cm  
All measurements are expressed in cm

ADULT GLOVES			
SIZE	NUMBER	HAND (cm) Circonfenza mano senza pollice Hand circumference without thumb	HAND (Inches) Circonfenza mano senza pollice Hand circumference without thumb
S	8	18 - 19,5	7 - 7,6
M	9	19 - 21,5	7,4 - 8,5
L	10	21 - 23	8,3 - 9
XL	11	22,5 - 24	8,8 - 9
XXL	12	23 - 25,5	9 - 10

KID GLOVES	
SIZE	YEAR
S	5/6
M	7/8
L	9/10
XL	11/12



ADULT BOOTS																
European	35	36	37	38	39	40	41	42	43	44	45	46	47	48	49	50
US	3	4	4.5	5.5	6.5	7	8	8.5	9.5	10	11	12	12.5	13.5	14	15
UK	2	3	3.5	4.5	5.5	6	7	7.5	8.5	9	10	11	11.5	12.5	13	14
Japanese	22	23	23.5	24	25	25.5	26	27	27.5	28	29	29.5	30	31	31.5	32

KID BOOTS						
European	33	34	35	36	37	38
US	1.5	2.5	3	4	4.5	5.5
UK	0.5	1.5	2	3	3.5	4.5
Japanese	21	21.5	22	23	23.5	24

